



Eco-advance Inc.



**W**ith the advent of the 21st century, environmental issues attract renewed attention, calling for the creation of diversified values. In the circumstances, we are faced with a number of challenges, one of which is how to make a process of product consumption and recycling come to stay in our various field of activity, while ensuring that the process is fully economically justifiable.

In the past, we at DMW Corporation (a builder and distributor of large industrial pumps and blowers) had approached environmental issues through the manufacture and sale of underwater dredging robots, which carry out dredging at power plants, rivers and elsewhere, and the high-speed organic waste fermentation and recycling system "PATH • TOOL." Eco-advance Inc. has now come into being to speed up our response in this field of industry and thus make for the creation of a new erase of recycling society.



# Corporate Information

---

1. Company Name      Eco-advance Inc.
  
2. President            Noboru Kuroda
  
3. Founded             June 2, 2003, when the underwater dredging robot and organic waste fermentation treatment plant branch of DMW Corporation, a builder and distributor of underwater dredging robots, dam reservoir water quality improvement equipment and organic waste fermentation treatment equipment, was separated and organized into a new corporation.
  
4. Line of Business    (1) Planning, engineering, manufacture, sale, electrical construction and mechanical fitting of ecology-related facilities, such as wastewater treatment equipment and composting equipment, and all associated businesses  
                              (2) Planning, engineering, manufacture and sale of equipment relating to dredging operations, and implementation of civil-engineering and dredging projects
  
5. Capitalized at      ¥30,000 thousand
  
6. History              1986 Type M-1 underwater dredging robot developed by DMW Corporation working jointly with Chubu Electric Power Co., Inc.  
                              1989 Type S-1 underwater dredging robot developed and combined with water treatment equipment to perfect the "SUBMERD Process."  
                              1997 Organic waste fermentation and recycling system "PATH · TOOL" developed, manufactured and released.  
                              2003 Incorporated as the ecology-related department of DMW Corporation was separated and organized into a new corporation.  
                              Eco-advance Inc. incorporated to take over peripheral technologies relating to underwater dredging robots and the organic waste fermentation and recycling system "PATH · TOOL".
  
7. Constructor Permit (granted October 16, 2003)  
                              Governor of Shizuoka Prefecture Permit (General 15) No. 032715  
                              (Civil-engineering, electrical construction, steel structure construction, dredging, and machinery and tool installation)



## Concepts of Incorporation

---

**C**ontribute to the creation of a new era of recycling society by developing exclusive technologies that target social infrastructures, such as energies and agriculture.

**P**ropose, build and deliver equipment best tailored to customer needs.

**E**xplore new applications for existing technologies and develop new technologies together with customer.

## Line of Business

---

**C**leaning of the intake and discharge systems at thermal, hydraulic and nuclear power plants

Manufacture and sale of machinery and equipment, and contracting of surveying and cleaning services

**E**ffective utilization and recovery of marine organic substances

Manufacture and installation of crushing treatment equipment and composting equipment

**D**redging works for maintaining, and improving water quality in, rivers, lakes and settling basins

Manufacture and sale of machinery and equipment, and contracting of surveying and dredging works

**E**ffective utilization and recovery of livestock and food organic substances

Manufacture and installation of composting equipment and wastewater treatment equipment

**F**ishery and harbors : Development and sale of new equipment

**B**iomass : Development and sale of new technologies

## Specialties

---

1 Bacillus-based fermentation and wastewater treatment technologies

2 Effective utilization technologies for marine organic substance, shell sludge, shells and so forth

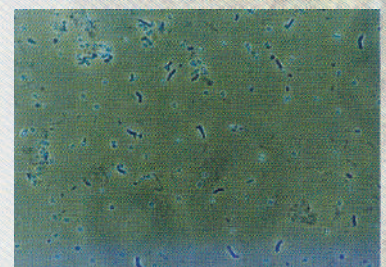
3 Slurry transportation technology

4. Underwater equipment technology

5. (Super) high-pressure water technology



Generated compost farm fertilization test  
Numazu/Sugiyama Farm



High-performance, high-concentration bacillus researched at Ina Human-waste Treatment Center (used for fermentation and wastewater treatment)